

Instructions for installing the Dental Direct Implant Library under 3Shape

If you have downloaded the current Implant Library, you can carry out the installation with our help or independently. If you need our support, please send us a short e-mail to support@dentaldirekt.de or simply call +49 5428 50168-30 an.

On the following pages we show you an example of the installation of the Dental Direkt Implant Library on an in-house computer.

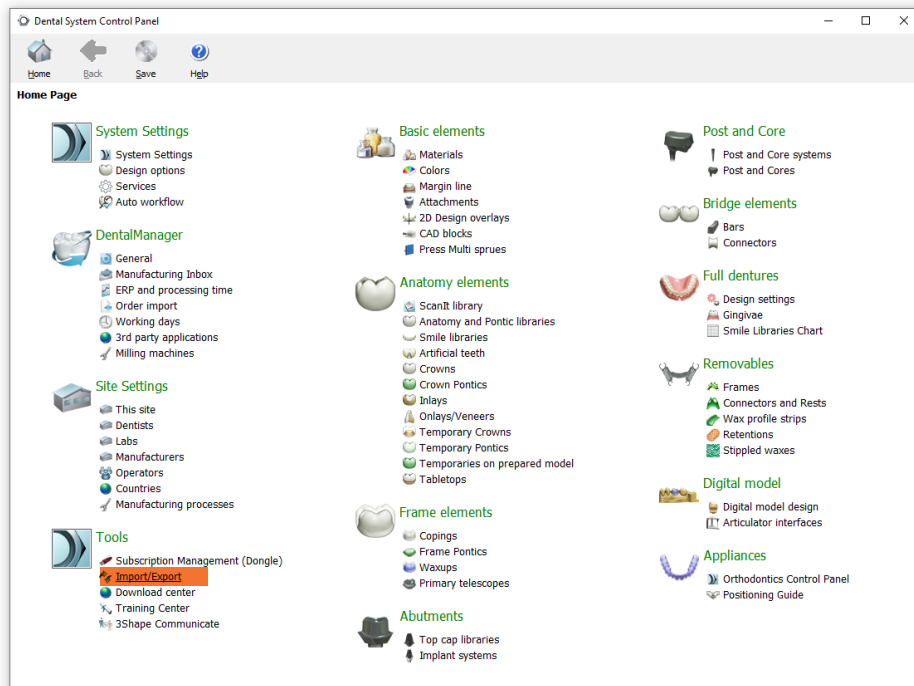
Step 1:

You unpack the file you receive from us in a folder of your choice, which you will find easily. Then start **3Shape Dental System Control Panel** with a double click.



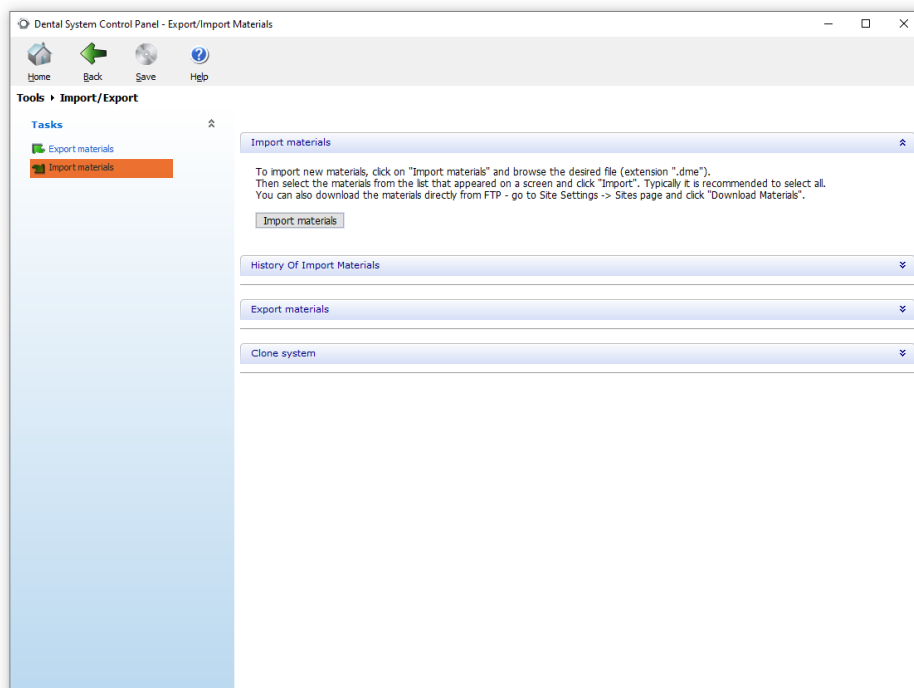
Step 2:

In the 3Shape Dental System Control Panel we navigate to the **"Import/Export"** item.

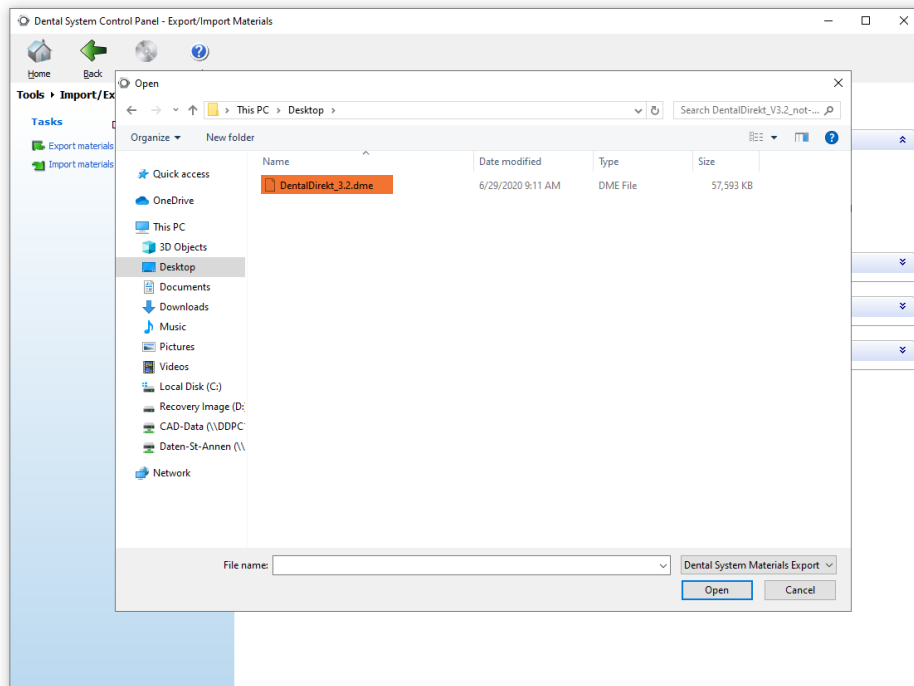


Step 3:

Click on **"Import materials"**. In the opened window you will get to the import function.

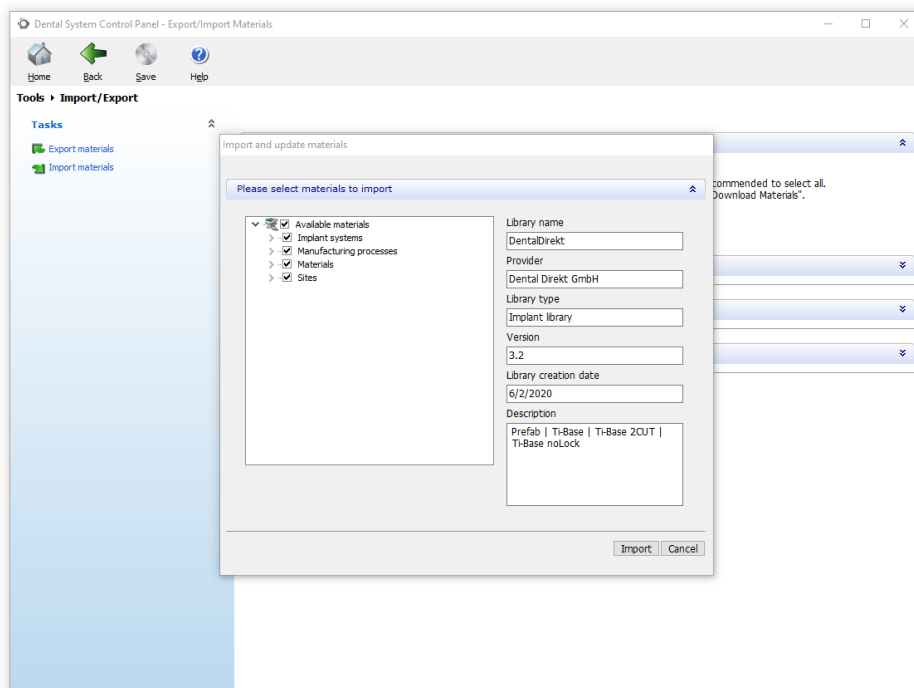


The Windows Explorer appears directly. Select the previously unpacked Dental Direkt Implant Library. In the example shown here we use version 3.2.

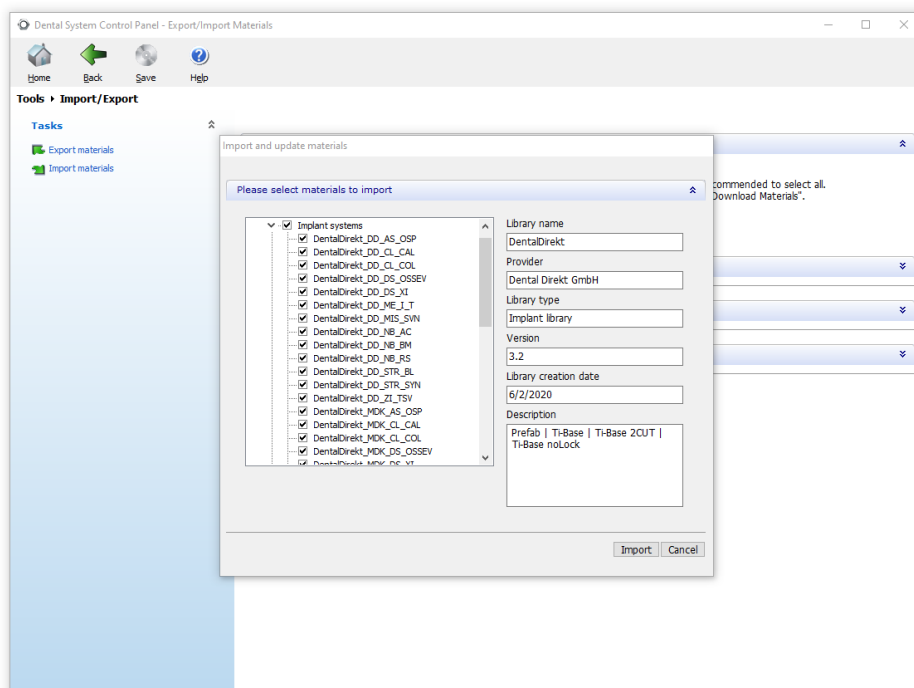


Step 4:

After a short loading time we are shown which systems the library contains. Here you can select and deselect the individual entries using the checkbox.



You should pay special attention to the topic of **"implant systems"**. These include our current systems for the following types of scanbody: **Dental Direkt / NT Trading / Medentika**. If you do not have or use all scanbody types in your laboratory, you can easily deselect them here and thus exclude them from import.



After a short calculation time the import is completed and you can design with the new library. After a **restart of 3Shape** you can use the library you have just imported for your design.