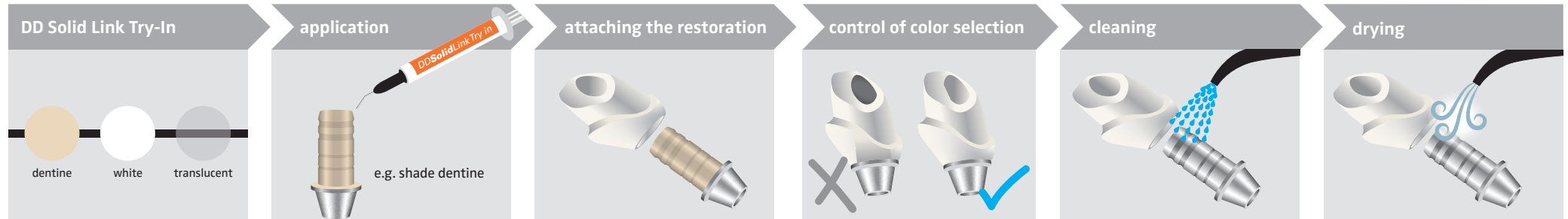


DD Solid Link Luting System – Dental laboratory

The DD Solid Link Luting System is a complete solution for dental laboratories and dental offices for the permanent luting of all common dental materials. DD Uni Bond is suitable for all materials except PMMA. Please use suitable bonding agent.



optional: shade selection



1. conditioning titanium base

preparing

Clean and prepare the titanium base according to manufacturer's instructions. The surface to be bonded must be free of impurities and grease. We recommend closing the screw channel before bonding.

2. conditioning abutment/restoration

preparing

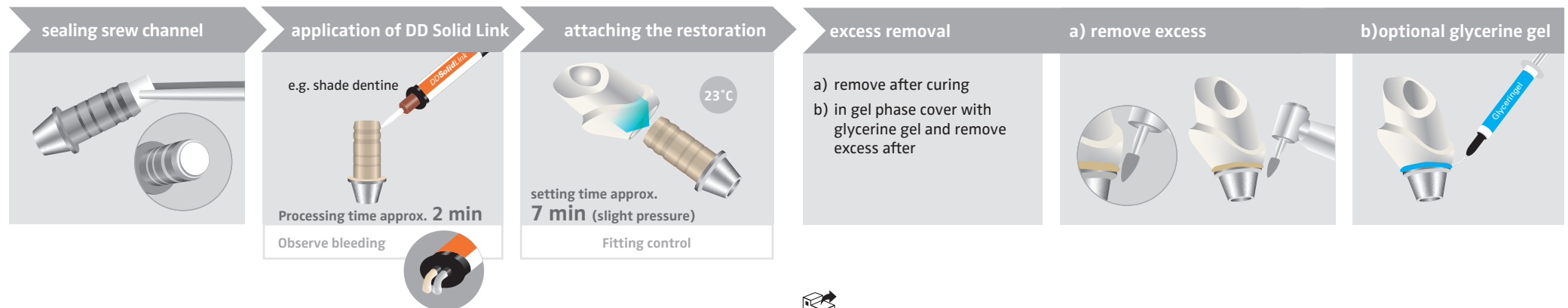
Clean and prepare restoration according to manufacturer's instructions.

3. luting

application of DD Uni Bond

let it react for **60 s**

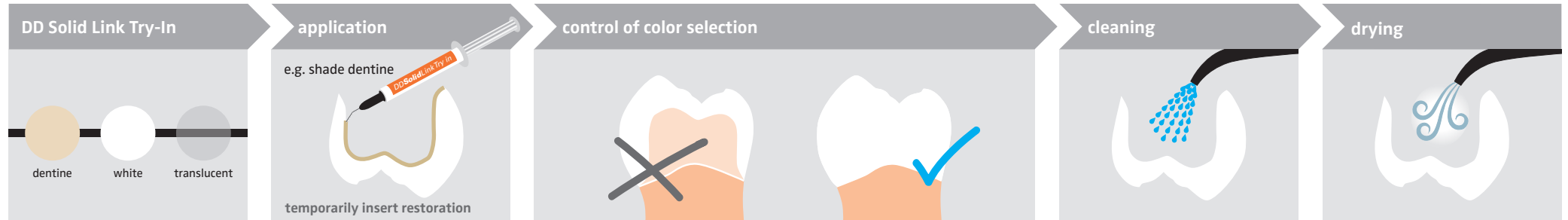
drying



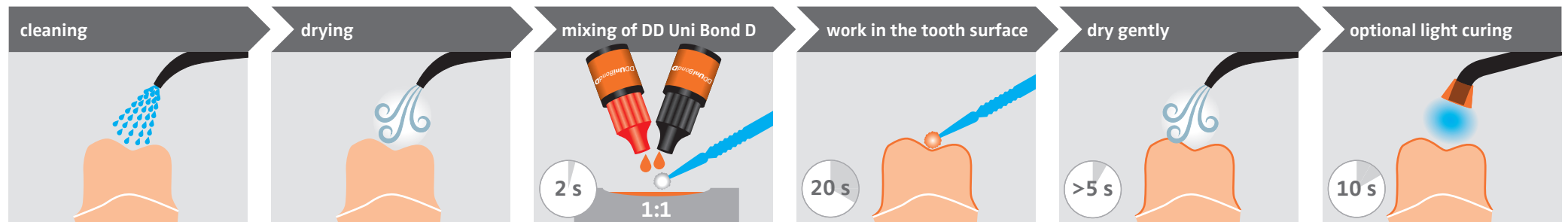
DD Solid Link Luting System – Dentist

The DD Solid Link Luting System is a complete solution for dental laboratories and dental offices for the permanent luting of all common dental materials. DD Uni Bond is suitable for all materials except PMMA. Please use suitable PMMA bonding agent.

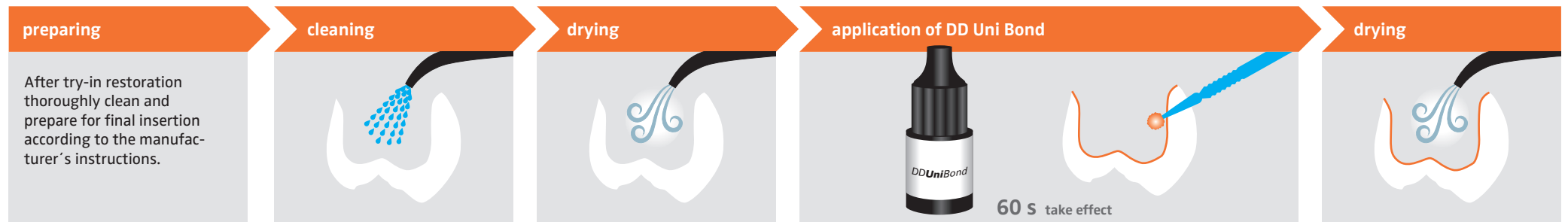
optional: shade selection



1. conditioning tooth structure



2. conditioning restoration



3. luting

