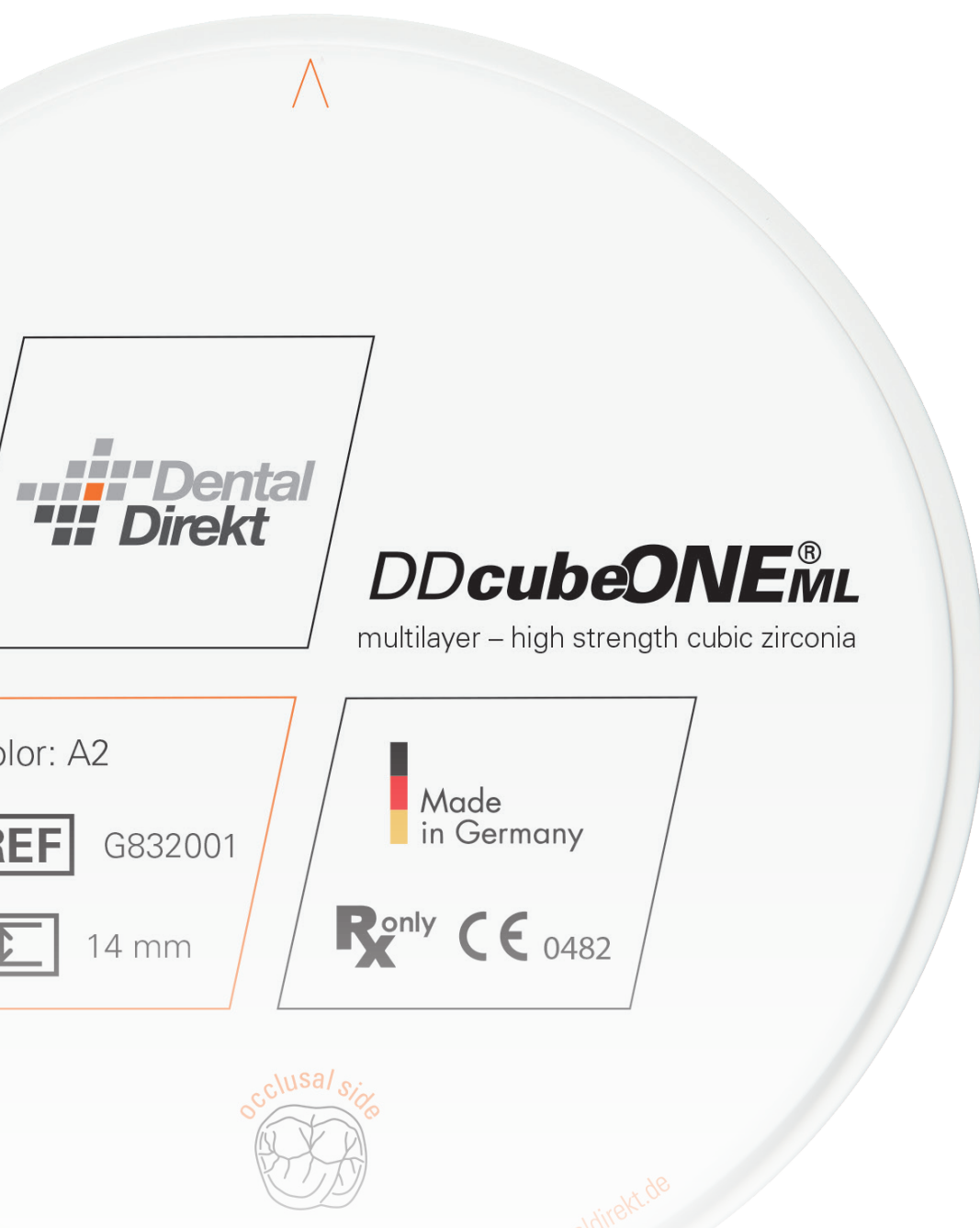


DAILY PRACTICE

When enthusiasm is contagious!

// Successful working with DD contrast®
colors and textures on DD cube ONE® ML //

by MDT Roman Wolf, Germany



CLOSE TO YOU



The long-term temporary as the basis for a successful definitive restoration

On the journey to an accurately fitting and aesthetically pleasing dental restoration for the patient, it is indispensable for me to deal with the patient's individual wishes, demands and problems as early as the provisional restoration phase. In my opinion, the temporary restoration is the linchpin and an important intermediate step in the fabrication of the definitive restoration. The following case shows how to proceed when planning a temporary restoration and how to combine digital and conventional methods when implementing it.

Based on the analogue set-up, the setup was digitized and milled from tooth-coloured polymer (DD poly X ML) as a gear rim. The advantages of the temporary milled from »one piece« are clear: Uniform, homogeneous material properties as well as optimum strength and stability. Thanks to the multi-layer gradient, only minimal refinements are necessary to create an aesthetically individual touch.

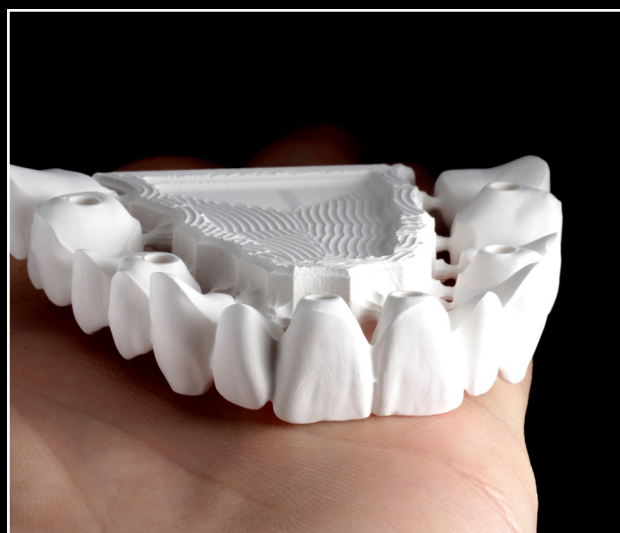




From the long-term temporary to the definitive restoration – milled from DD cube ONE® ML and finalised with DD contrast®

After first dealing with the temporary restoration made of DD poly X ML and describing the importance of the temporary restoration as an important and integral component in the completion of the definitive restoration, we now turn after a 6-month healing phase to the completion of the definitive implant-supported zirconium oxide restoration made of DD cube ONE® ML, H22 in shade A3.

DD cube ONE® ML combines translucency and strength and is therefore ideally suited for the fabrication of highly aesthetic fully monolithic restorations. In the crystal structure of DD cube ONE® ML, cubic and tetragonal zirconia are present in a perfect ratio. The defined quantity and controlled size of the cubic crystals reduces the refractive index and increases translucency. The dominant, smaller, tetragonal crystals increase stability.



In the show work shown, we achieve a perfect balance between mechanical strength and translucency. After milling, even before sintering, the translucency is increased in the area of the anterior teeth at the incisal edge thanks to the application of DD Incisal X. The effect becomes clear after sintering.

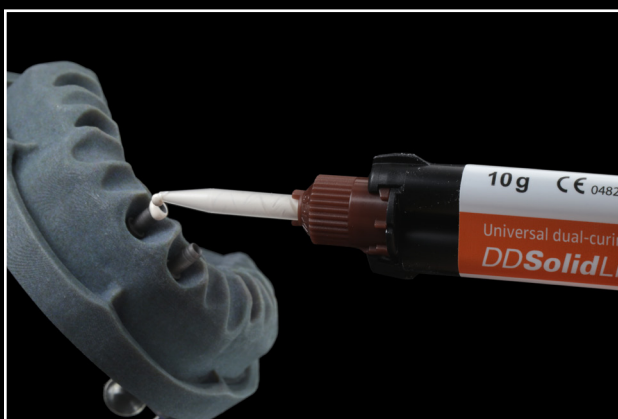
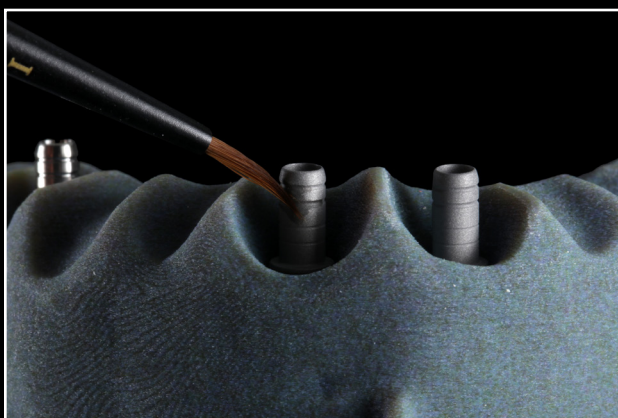


Finishing:

By finishing with DD contrast® we achieve unprecedented aesthetics with zirconia.



After conditioning the Ti-Base 2CUT noLock adhesive bases with DD Uni Bond and the subsequent application of the DD Solid Link luting material, the work is completed.







Master Dental Technician Roman Wolf
Burglengenfeld, Germany
www.wolfsart-dental.de

WOLFS ART
Dentalstudio

The temporary made of DD poly X ML – the high-performance polymer

The DD poly X ML – the material for aesthetic long-term temporary restorations up to 12 months and digital denture teeth and bridges for removable teeth-replacement (MDD/MDR Class IIa). DD poly X ML is based on a layer concept that combines the 5 layers in the Selective Injection Compression Moulding (SICM) process, thus ensuring a natural and aesthetic colour gradient. The highly cross-linked polymethyl methacrylate (PMMA) with a reinforced matrix ensures a high molecular weight, giving the material a hardness and abrasion resistance similar to that of the natural tooth itself. Available in 6 VITA® tooth shades.

The definitive restoration made of DD cube ONE® ML – the universal zirconia that combines beauty and stability.

The hybrid microstructure, in which the cubic and tetragonal crystal structures are ideally balanced, combines increased translucency with an increased fracture protection factor and makes DD cube ONE® the multi-indicative solution for highly esthetic fully anatomical or minimally veneered restorations. In the multilayer version, the five main layers are optimally coordinated with each other and ensure homogeneous mixing in the transition layers – this guarantees a smooth shade and translucency progression in the layers. With the precise reduction of additives from incisal to cervical by the Multi Additive Technology®, the perfect interaction of color and translucency is achieved. Available in all 16 VITA® tooth shades and 1 Bleach shade.



DD poly X ML product page
on www.dentaldirekt.de/en



DD cube ONE ML product page
on www.dentaldirekt.de/en