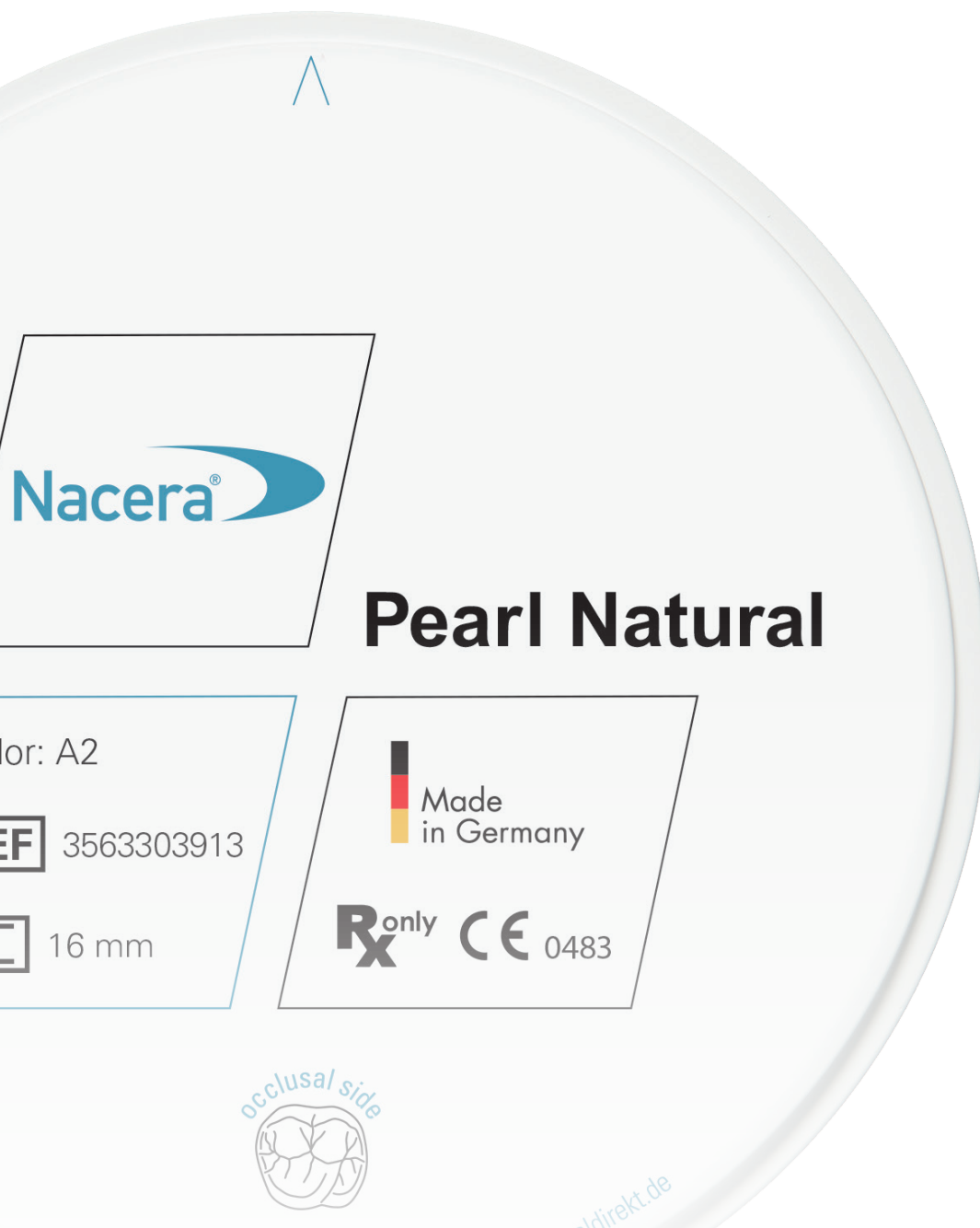


DAILY PRACTICE

Implant planning as the basis for success

// With DD materials from the drilling template
to the superstructure //

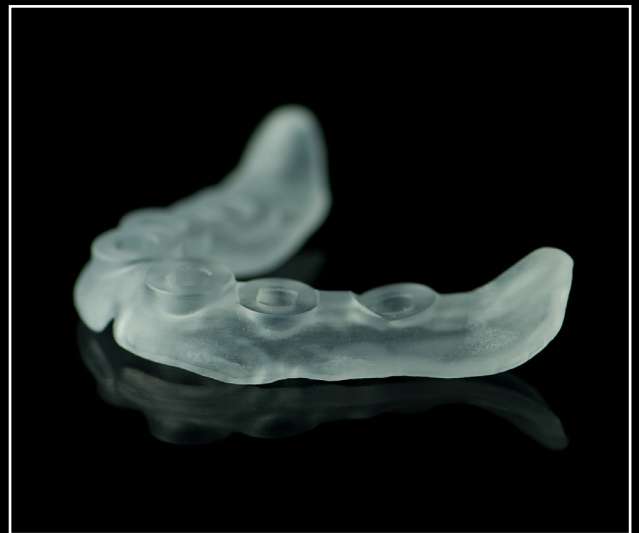
by DT Frank Löring, Germany

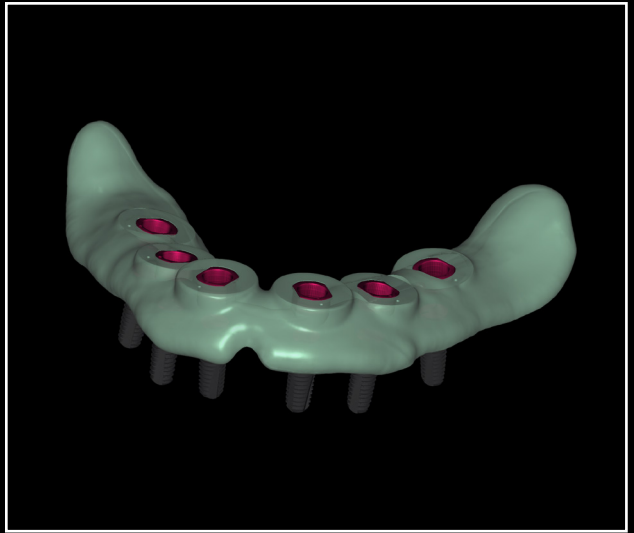


Implant-supported screw-retained denture in the lower jaw:
Drill template made of **DD Bio Splint C**,
superstructure made of **Nacera® Pearl Natural**,
finishing with **DD contrast®**

Implant planning as the basis for success

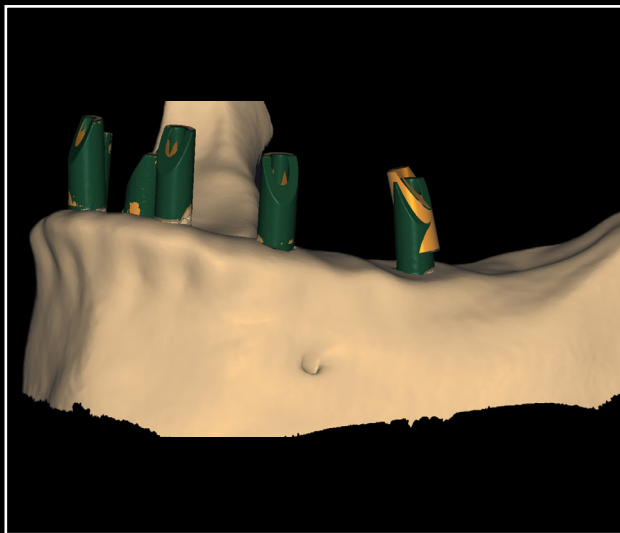
The drilling template for placing the implants is made according to the instructions of the treating dentist. Basically, there are two possible procedures with the additive or subtractive method. Here we used the software from exoplan, an open software solution for implant planning and surgical guide design. In our case, the surgical guide was milled from DD Bio Splint C.

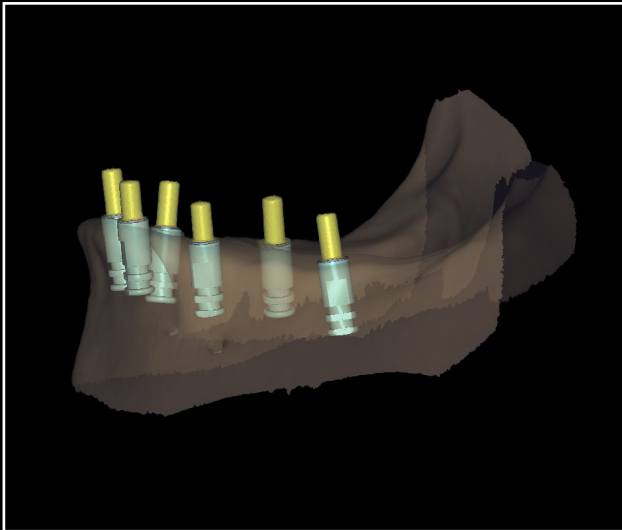




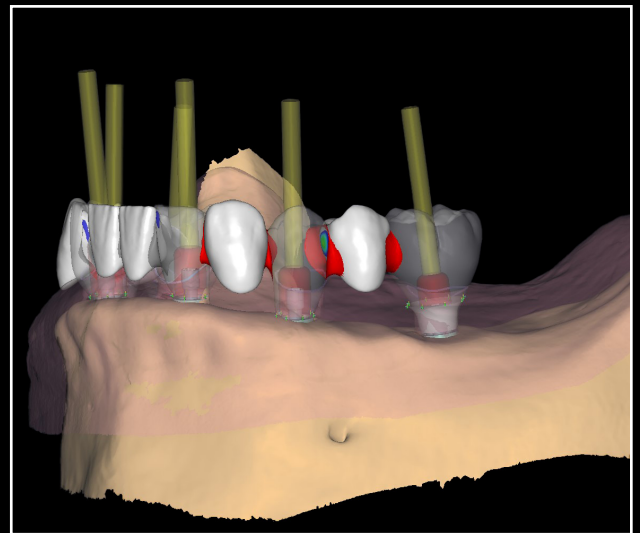
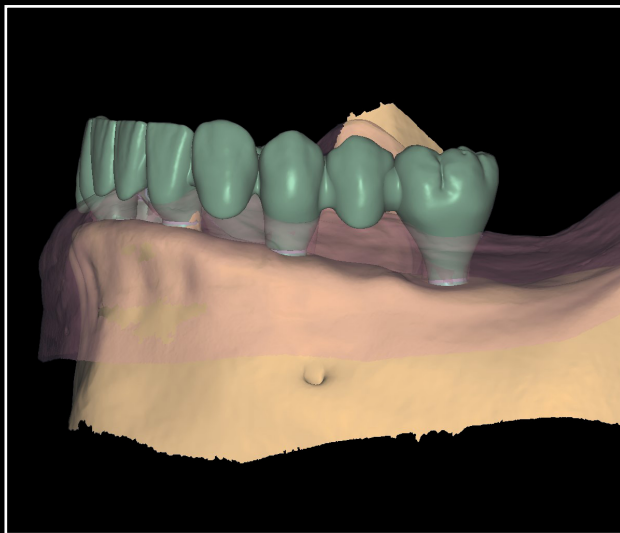
For the highest aesthetic demands, Nacera® Pearl Natural was chosen.

Six of the Scanbody's 2.0 were used for the digital impression. The bridge was constructed on Ti-Base 2CUT noLock. With these abutments, height can be reduced individually. Thanks to an optimised bonding surface, we achieve maximum durability. Thanks to a minimum gingival height of 0.3 mm, individual design freedom is given. Since the noLock version offers freedom of rotation, it is perfect for multi-unit restorations.





Once the bridge has been designed using state-of-the-art CAD software, it is milled from Nacera® Pearl Natural.
Why was Nacera® Pearl Natural chosen?



Nacera® Pearl Natural zirconia gives all constructions – from single crowns to large fully anatomical implant-supported restorations – a lifelike character, which appears in the way of flowing colour gradients and natural translucency transitions after sintering.

16 shades, two bleach shades according to the VITA® shade guide, as well as a specially developed bleach shade cover all common tooth shades and meet the highest aesthetic demands.



The restoration was finalised with DD contrast®. As it says on the Dental Direkt homepage:

DD contrast®, the color and texture system from Dental Direkt, gives fully monolithic restorations optimum color intensity, plastic depth effect and different fluorescence. It creates a wonderful symbiosis with the color and light systems of our monolithic zirconia.



Dental technician Frank Löring
Witten, Germany
www.loering-dentaltechnik.de

DD Solid Connect® – Forever connected

»To ensure life quality, top performance has to be anchored.« This guiding principle describes the motivation behind the development of DD Solid Connect® implant components. Testing the reliability of our prefabricated abutments, titanium adhesive bases, scanbodies, fusion analogues and screw systems is therefore an essential part of our research and development work.

The result of our motivation:

DD Solid Connect® implant components from a full-service provider – everything from a single source and all coordinated. Because perfect prosthetics is more than the sum of its parts.

Nacera® Pearl Natural – the intelligent type multilayer

Nacera® Pearl Natural combines the best of two zirconia generations. While the cervical area (3Y-TZP) with a flexural strength of 1,200 MPa establishes the stability of the restoration, the incisal area (6Y-PSZ) impresses with super-high translucent aesthetics. Whether it is single crowns or large fully anatomical implant-supported restorations – Nacera® Pearl Natural gives all constructions a lifelike character, which is revealed in natural colour and translucency gradients after sintering. Available in all 16-VITA® tooth shades + 3 Bleach shades.

DD Bio Splint C – innovative polycarbonate

DD Bio Splint C blanks are made of a biocompatible high-performance polymer based on a medical grade polycarbonate. This material innovation has been developed as an ideal material for CAM-produced bite splints. In the CAD/CAM process, you achieve a perfect fit without reworking.



Nacera® Pearl Natural product page on www.dentaldirekt.de/en



DD Solid Connect® product page on www.dentaldirekt.de/en



DD Bio Splint C product page on www.dentaldirekt.de/en