

# MEDIT Intraoral scanner



#yeswescan

# The MEDIT trio at a glance



## Specifications

		MEDIT <i>i600</i>
Scanning Technology	Scanning Frame	Up to 35 FPS
	Imaging Technology	3D-in-motion video technology 3D full color streaming capture
	LED Source	LED
	Anti-Fogging Technology	Adaptive anti-fogging
Accuracy	Full-Arch	10,9µm ± 0,98
Handpiece	Dimensions	248 x 44 x 47,4 mm
	Total Weight	245 g
Tip	Tip Size	22,2 x 15,9 mm
	Mirror angle	–
	Scan area	15 x 13 mm
	Autoclavable	Up to 100 x - autoclavable at 121 °C – 30 min. - autoclavable at 134 °C – 4 min. (Pre-Vacuum Type) - autoclavable at 135 °C – 10 min. (Gravity Type)
	Reversible tip	Yes
Special Mode	Remote control mode	No
	UV-C disinfection	No
Connectivity	Cable / Wireless	2,0 m Cable (2,5 m on request) / Handpiece detachable
	Connectivity	USB 3.1 Gen1



## MEDIT i700

## MEDIT i700 wireless

Up to 70 FPS	Up to 70 FPS
3D-in-motion video technology 3D full color streaming capture	3D-in-motion video technology 3D full color streaming capture
LED	LED
Adaptive anti-fogging	Adaptive anti-fogging
10,9µm ± 0,98	10,9µm ± 0,98
248 x 44 x 47,4 mm	313 x 44 x 47,4 mm
245 g	328 g
22,2 x 15,9 mm	22,2 x 17,1 mm
45-degree angle Easier to scan distal molar area	—
15 x 13 mm	15 x 13 mm
Up to 100 x - autoclavable at 121 °C – 30 min. - autoclavable at 134 °C – 4 min. - autoclavable at 135 °C – 10 min.	Up to 150 x - autoclavable at 121 °C – 30 min. (Gravity Type) - autoclavable at 134 °C – 4 min. (Pre-Vacuum Type) - autoclavable at 135 °C – 10 min. (Gravity Type)
Yes	Yes
Yes	Yes
Yes	Yes
2,0 m Cable (2,5 m on request) / Handpiece detachable	Wireless
USB 3.1 Gen1 (C Power Delivery)	USB 3.1 Gen1 (Wireless Hub)

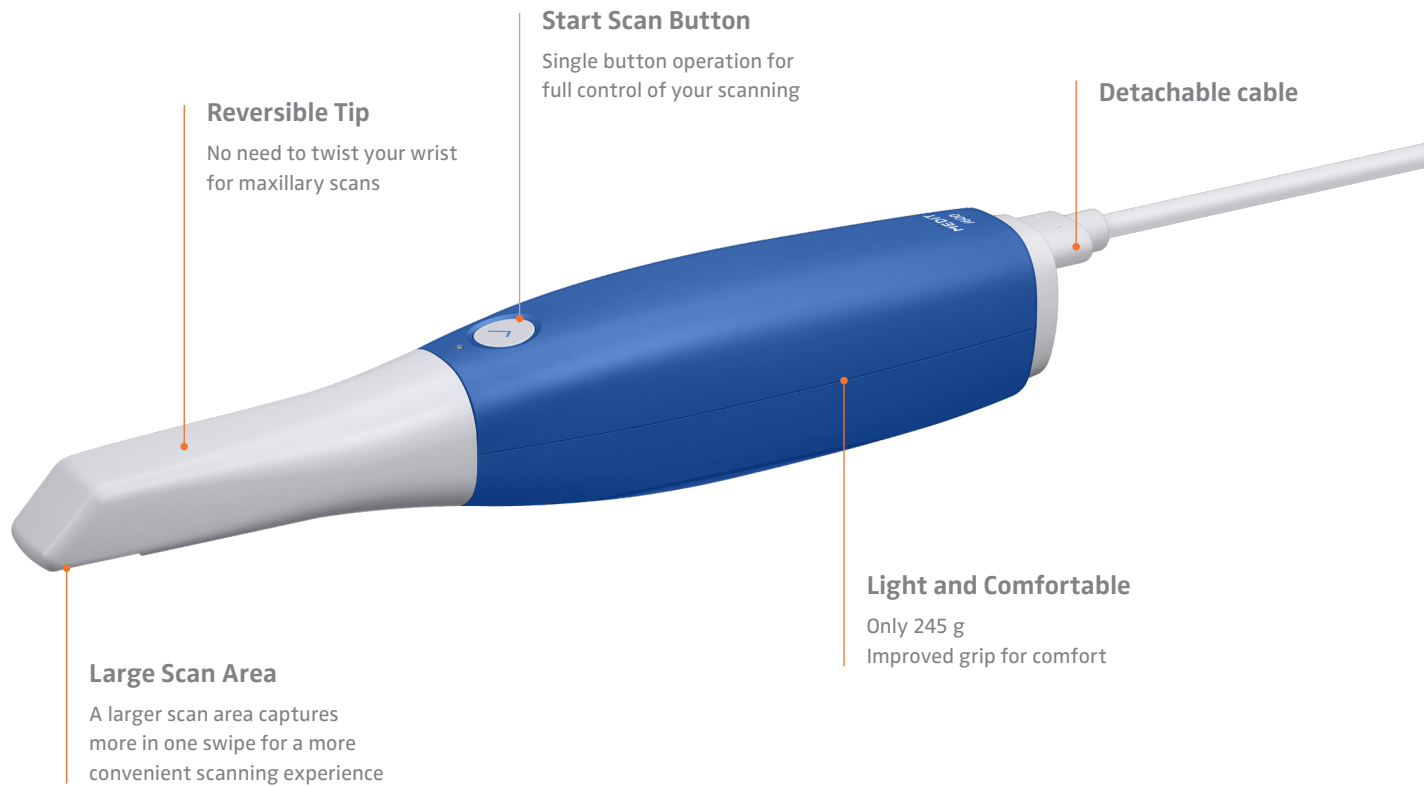
# MEDIT *i600*



MEDIT  
*i600*

# Digital Dentistry at your Fingertips

The Brain of the i700 with a Splash of Color.



## IT'S SUPER



### Light

245 g featherweight with improved grip for comfort



### Smooth

Improved speed and optimal scanned images deliver a smoother scanning experience. Smooth like silk, regardless of PC specs.



### Accurate

The digital workflow begins with accurate data. Medit i600 precisely acquires data for effortless digital dentistry. Full-arch accuracy:  $10.9 \mu\text{m} \pm 0.98$



### Vivid

Transmits vivid scan data via the new optical system already used in the Medit i700.



### Easy

From simple operation using one button to software programs that make scanning easier. The i600 is everything that makes digital dentistry so easy.

# MEDIT *i700*

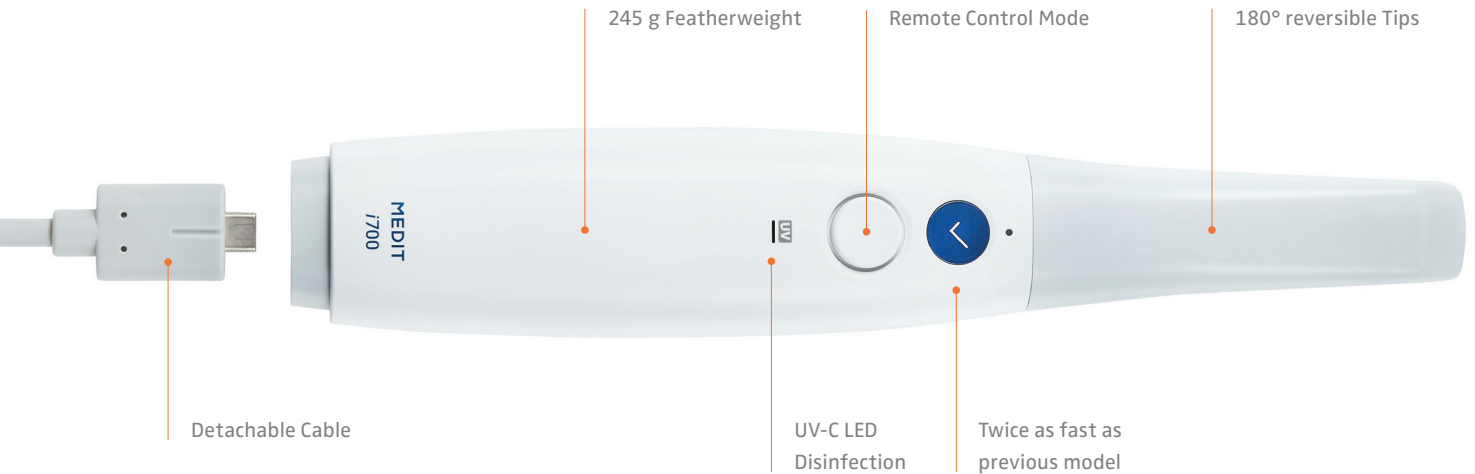


MEDIT  
*i700*

UV

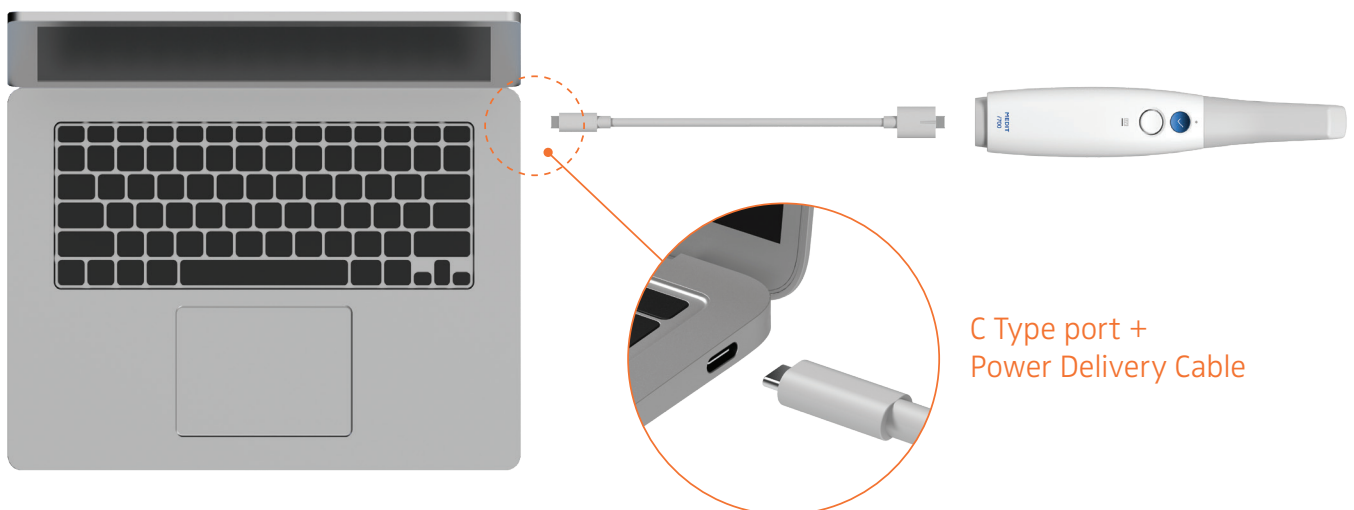
# Scanning Reimagined

Unleash your Clinic's Potential.



## Medit Plug & Scan

Unlike most scanners on the market, the Medit i700 can be **directly connected to the PC using the power delivery cable**. No need for a power hub or extra cables. This new feature of Medit i700 improves the mobility and the maintenance.



Minimum System Requirement: USB Type-C / USB Power Delivery 5V, 3A Power delivery support

# MEDIT *i700* wireless





# Beyond i700's Proven Tech

Still the same **super fast, light, and accurate i700**. But now **wireless**.



## No More Wires

Free from wires, scanning is comfortable at any angle. Scan proximal areas effortlessly without constraints in movement.



## Supercharged Yet Light

Outstanding weight balance even with a battery attached for added comfort.



## Fast, Accurate, Connected

Scanning speed of up to 70 FPS\*. Enjoy the fast speed of the i700 wirelessly, flawlessly.



## Powerful Hardware Meets Versatile Software

Optimized for convenience. Not only from hardware aspects, but also software. i700 wireless, packed with the latest of MEDIT technology.

## 1 hour of continuous scanning, up to 8 hours in standby mode

MEDIT i700 wireless

1 hour

VS

Scanner A

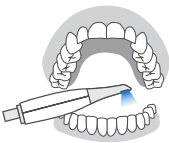
45 min

Scanner B

30 min

\*Battery time can vary depending on the user environment (temperature, signal strength, etc.) and battery condition.

## All-Day-Scan-with-Single-Battery. Scan all day without worrying about charging.



Maxillary + Mandibular + Occlusion

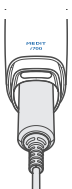
Total scan time of **2 minutes\***



Scan up to **30 cases** with 1 battery



Up to **90 cases** using the 3 included batteries



### Wired power connection:

Once you've used up all 3 included batteries, simply connect the power cable and keep using the device.



Intelligent power management function automatically switches the device to sleep mode when not in use, standing by up to 8 hours. It takes just seconds to wake the device for scanning.

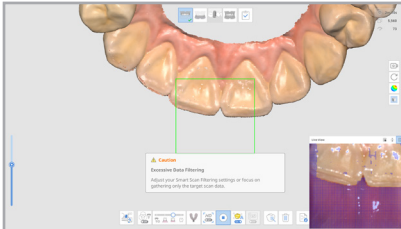
\*Performance may vary according to usage conditions.

Experience amazing digital dentistry with **Medit Scan for Clinics**. Our cutting-edge software technology makes scanning more convenient for you.

## For scanning assistance

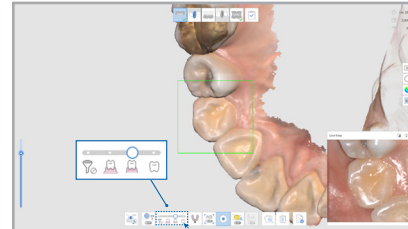
---

### Smart Scan Guide



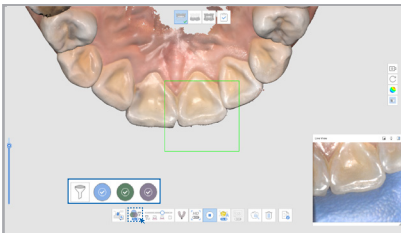
Improved user guidance provides help for abnormalities detected during scanning.

### Smart Scan Filtering



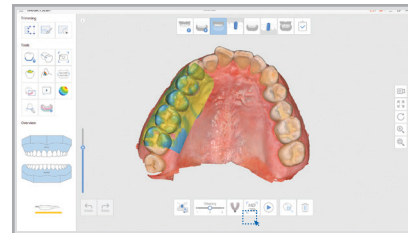
Enhanced A.I. filtering performance eases the scanning process by filtering out soft tissue such as lips, cheeks, and tongue.

### Smart Color Filtering



Automatically filters registered colors, e.g. the color of medical gloves, during scanning.

### Impression Scanning

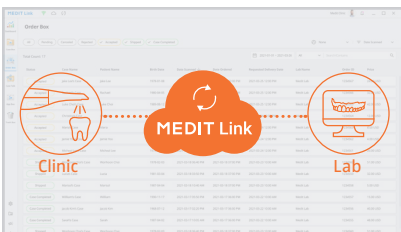


Get the data from the hard-to-scan areas using an impression, scan it, and combine with the intraoral data.

## Scan and Communicate

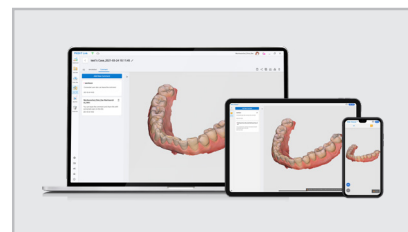
---

### Cloud-based Service



Store all data in the cloud. Work on your original scans, archive your digital impressions and orders, manage your cases wherever you are.

### Web Viewer & Case Talk

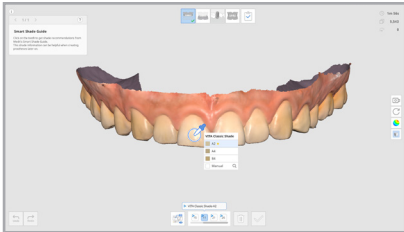


Experience smoother communication with partners. View scan data on any device and share notes. All data is stored securely.

## For more precise and accurate scan data

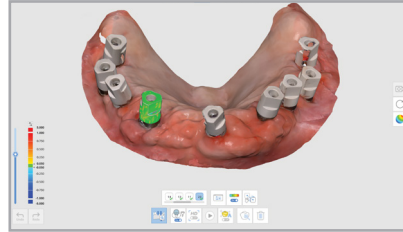
---

### Smart Shade Guide



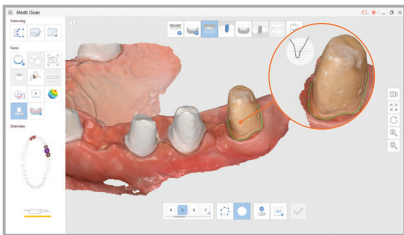
Automatically identifies and suggests the best matching shade from scan data.

### A.I. Scan Body Matching



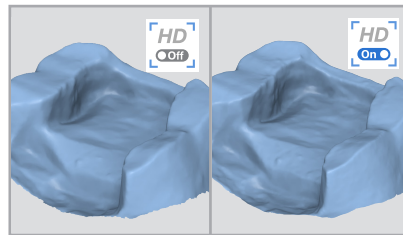
Ensures accurate scan body data in difficult-to-scan areas, such as the posterior region.

### Margin Line Creation



Choose between allowing the system to automatically generate the margin line for any tooth or create it manually.

### HD Mode



Acquire a sharper scan image in the margin area with the upgraded HD Mode.

## Medit Apps

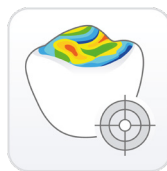
---



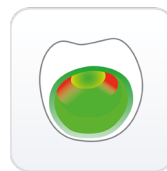
Smile Design



Ortho Simulation



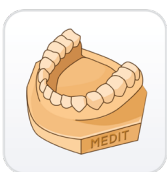
Occlusion Analyzer



Crown Fit



Design



Model Builder



Temporaries



DCM Converter



Calibration Wizard



# ScanScooter

Top mobility in practice

- Medical-grade surfaces  
easy to disinfect
- Drawer  
for storing the notebook, cooling pad  
and cable
- Swiveling keyboard  
for optimal interaction with the patient
- Infinitely height-adjustable  
allowing standing and sitting tasks
- Smooth rollers  
for all floor coverings

Art-no.: PM033ENG

Rev. 02\_2022/08